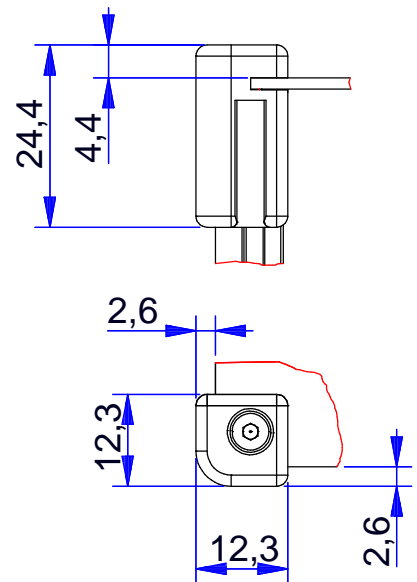


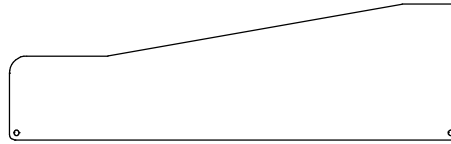
Detail Eckstück



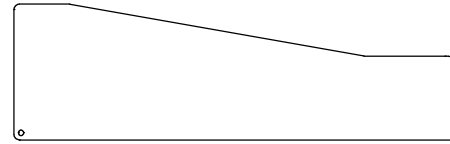
B = _____ mm
H1 = _____ mm
H2 = _____ mm
T1 = _____ mm
T2 = _____ mm
T3 = _____ mm

| | | | | | | | |
|---|----------|-------|------|--|--------------|------------|--|
|  RICHARD WÖHR <small>GMBH</small> www.WoehrGmbH.de | | | | Maßstab: 1: 2.5 | | Gewicht: | |
| | | | | Schutzvermerk nach DIN 16016 beachten / Freimasstoleranzen nach DIN 7168 mittel Not measured outlines take from the 3D- or dxf-data | | | |
| | | | | Bearb. | Datum | Name | |
| | | | | Gepr. | 19. 01. 2015 | A. Schwarz | |
| | | | | Norm | | | |
| | | | | Richard Wöhr GmbH | | | |
| | | | | D-75339 Höfen / Enz | | | |
| | | | | Richard@WoehrGmbH.de | | | |
| Zust. | Änderung | Datum | Name | Urspr. | Ers. f.: | Ers. d.: | |
| | | | | | | Blatt 1 | |
| | | | | | | Bl. | |

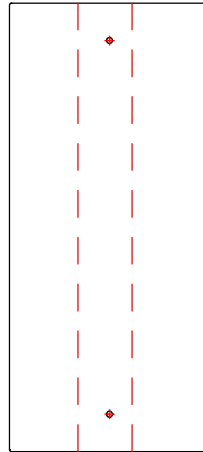
Seitenwand rechts



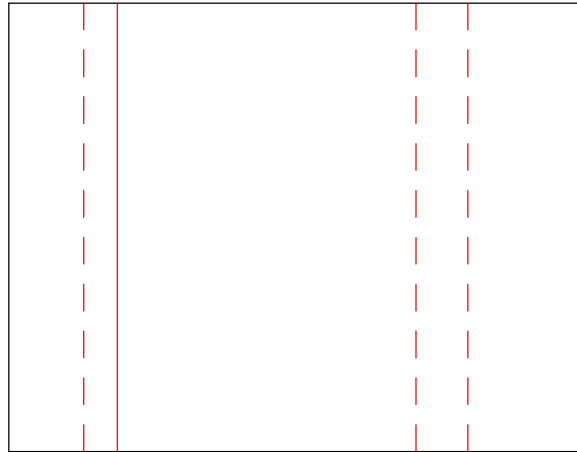
Seitenwand links



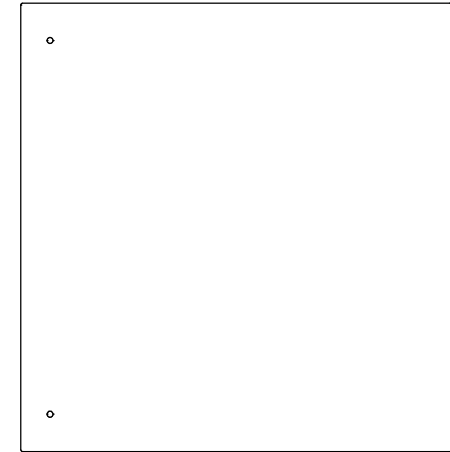
Deckblech vorne



Deckblech



Bodenplatte



B = _____ mm

H1 = _____ mm


H2 = _____ mm

T1 = _____ mm

T2 = _____ mm

T3 = _____ mm

T4 = _____ mm

| | | | | | | | | |
|---|----------|-------|------|--|------------|--------------|-----------------------------|------------|
|  www.WoehrGmbH.de | | | | Maßstab: 1:5 | | Gewicht: | | |
| | | | | Schutzvermerk nach DIN 16016 beachten / Freimasstoleranzen nach DIN 7168 mittel Not measured outlines take from the 3D- or dxf-data | | | | |
| | | | | Datum | Name | Prioline KSK | | KD: 169999 |
| | | | | Bearb. | 19.01.2015 | A. Schwarz | 2 KAMMERGEHÄUSE FORM VI KSK | |
| | | | | Gepr. | | | | |
| | | | | Norm | | | | |
| | | | | Richard Wöhr GmbH | | Material: | | Blatt 1 |
| | | | | D-75339 Höfen / Enz | | | | Bl. |
| | | | | Richard@WoehrGmbH.de | | | | |
| Zust. | Änderung | Datum | Name | Urspr. | Ers. f.: | Ers. d.: | | |